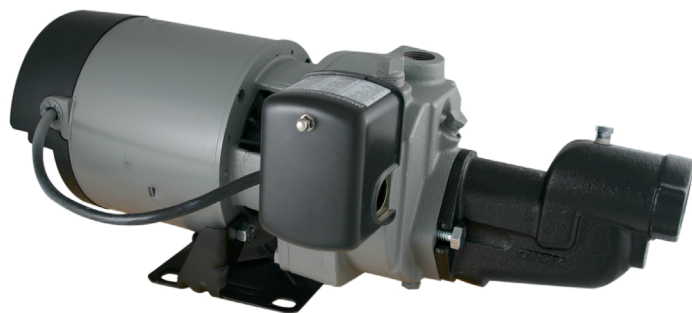


1/3 HP, 1 HP, 1-1/2 HP CAST IRON

High Pressure, High Volume Jet Pumps



FEATURES AND BENEFITS

- 115/230 dual voltage motor.
- Includes ejector for easy serviceability.
- Includes pressure switch.
- Thermal overload protects against overheating.
- Special priming port for easy priming.
- Carbon/ceramic mechanical shaft seal.
- Continuous duty uni-frame 56 frame motor (NEMA J adaptable).
- Capacitor start motors provide maximum starting torque.
- Easy access drain plug for winterizing.

PERFORMANCE

MODEL	AMPS	SUCTION LIFT FEET	PRESSURE SWITCH SETTING PSI	CAPACITIES - GPM AT DISCHARGE PSI							SHUT-OFF PRESSURE PSI
				20	30	40	50	60	70	80	
JHU03S 1/3 HP	8.6/4.3	5	20-40	11.1	10.5	9.3	6.5				
		15		8.5	8.3	7.6	5.1				
		25		5.1	5.1	5.0	4.0				
JHU10S 1 HP	14/7	5		20.0	20.0	19.5	18.3				65
		15		15.8	15.5	15.0	14.5				60
		25		10.0	9.7	9.5	9.0				55
JHU15S 1-1/2 HP	21/10.5	5		14.8	14.5	14.5	14.4	12.0	8.0	4.0	91
		15		10.5	10.3	10.4	10.5	10.1	6.3	2.5	90
		25		5.5	5.7	5.9	6.0	6.0	4.0	0.0	88

Above chart based on 1-1/4" x 1" suction and discharge



WATER SYSTEMS

MODELS JHU03S, JHU10S, JHU15S



JHU03S
JHU10S
JHU15S

UPC# 054757000813
UPC# 054757002541
UPC# 054757000745



starwatersystems.com
Toll Free Help Line
1-800-742-5044

SW1602 A